

Trustees-Legal responsibility and duties;

Chair -Robert Parry-Finances, Health and safety, Fire safety, First aid, recruitment of new trustees
Martin Taylor-Safeguarding, HR, Prevent and Channel,
Louise Lipman- equalities and diversity, SMC, Early years, SEND Nominated individual, Staff Wellbeing.
Claire Gregory-Legal issues, Quality of Teaching, assessment, progress and Educational monitoring
 (All trustees carry out leadership appraisal)

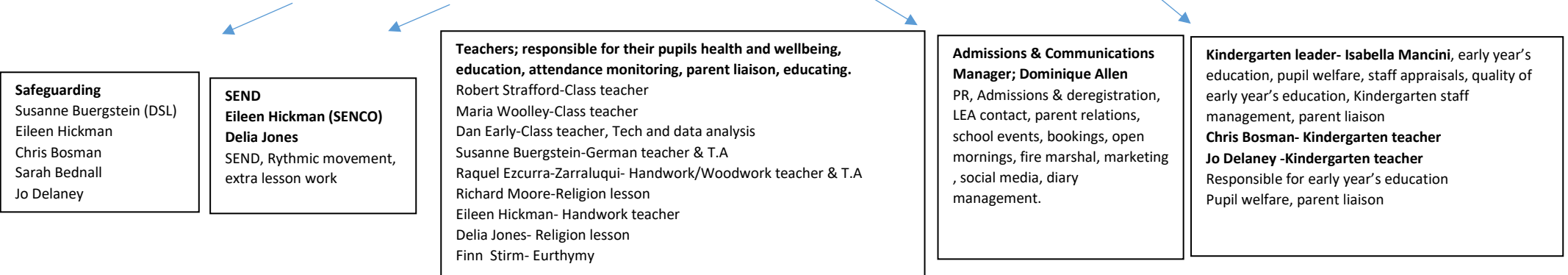


School Leadership

Chair of College/ Educational lead- Rob Strafford; Overseeing quality of education, teaching appraisal, assessment and progress, attendance, Safeguarding, and pupil behaviour
Deputy Chair of college/Deputy Education lead -Maria Woolley Overseeing quality of education, assessment and progress, overview of SEND.
School Manager, Fiona Stuart; HR, Finance, financial monitoring, budget setting, health and safety, overview of safeguarding, fire safety, pupil's welfare, site maintenance, Nursery line manager, Non-teaching staff line manager, policy and procedure, complaints, attendance monitoring, fire marshal



Iona College- Maria Woolley, Dominique Allen, Susanne Buerstein, Isabella Mancini, Chris Bosman, Delia Jones, Jo Delaney, Richard Moore, Dan Early, Fiona Stuart, Rob Strafford
Collegiate decision making on the day to day running of the school.



Helen Fitzsimmons –Receptionist
 Register monitoring, visitors, site security, day to day queries, pupil attendance and late monitoring (first stage) first aid nominated, fire marshal.

Class assistant
 Fahrat Parveen-SEN
 one to one worker

Cleaning, dinner lady and playground assistant
 Julie Frost

Afterschool assistants
 Eileen Thompson & Fiona Bristoir
 Maintaining and running afterschool club

Cook- Micheala Pickance
 All aspects of food hygiene, point of call for FSA, food stock ordering, meal and food preparation

Kindergarten Assistants
 Sarah Bednall
 Shaima Harkassi Addi